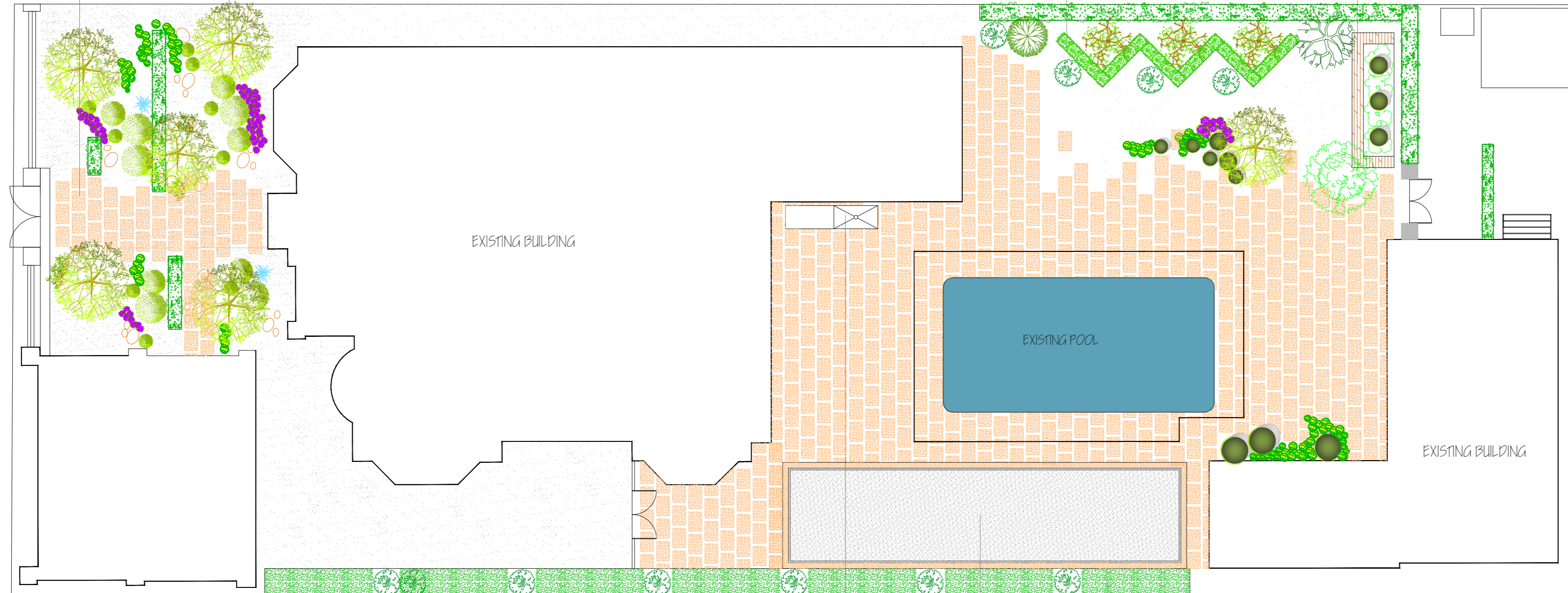


A pathway leading from the front pedestrian access to the porch. I recommend the pavers to be 600mm x 400mm sandstones pavers installed in an organic fashion to provide a soft feel, merging into the landscapes. The pavers to have a 50mm to 100mm gap between them for permeability.

5 Olea trees for height and to provide the Provençal feel. The trees will be underplanted with a combination of Prunus green gem globes of various sizes, Teucrium globes, Lavendula, Rosemarinus, Santolina, Chionodoxa flavicans, Phyllica plumosa. 3 Prunus green gem hedges will provide a manicured feel.

I recommend a set of Prunus lusitanica hedges to frame the fruit grove. 3 citrus will be planted in 3 pots from Anduze to provide colour and structure all year round. Behind the hedges, 3 Peach golden queens for height. On the boundary, I recommend mirroring the right hand side fence and planting to provide a uniform feel.

A raised vegetable and herb garden bed finished with a 500mm high 200 x 50 non treated Totara timber to provide a focal point for the outdoor room. I recommend installing 3 Rosemarinus standards for height and structure. I suggest reshaping the existing Laurus nobilis. Behind the tree, a white double-sided gate with an arch will be recessed into the Prunus hedge and leading to the hidden services (pool pump, cloth line and shed). I recommend the white gate to be finished with a 150mm wide paling to provide the desired effect.



I recommend a more structured yet open provincial outdoor room. I recommend a fireplace on the left-hand side of the Louvertec gazebo to provide a warm accessible fireplace close to the house and complete with a BBQ bench by the kitchen.

A petanque court finished with compacted lime pebble to provide the desired effect. I recommend installing a 100 x 50mm rs h4 treated timber framing the court to contain the boules.

Along the right hand side fence and in between the Cupressus totems, espaliered trees of various fruits to provide a seasonal wallpaper.

